

5" SHALLOW HOUSINGS AND TRIMS

juno[®]

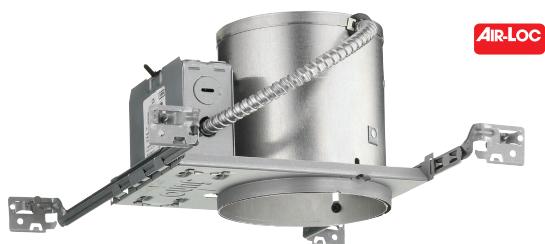
5" downlights and popular trim selections for use in applications where vertical installation space is limited



5" SHALLOW HOUSINGS AND TRIMS

- 5" shallow new construction and remodel housings designed to be installed in 2" x 6" construction.
- IC rated housing can be covered with insulation.
- Available with a variety of downlight, adjustable or lensed trims.

5" SHALLOW HOUSINGS



Cat. #	Description
IC25	5" IC Shallow New Construction Housing
IC25S	5" IC Shallow New Construction Housing with smaller footprint bar hanger (Real Nail® 2)
IC25W	5" IC Shallow New Construction Housing with push-in electrical connectors

11 7/8" L x 6 3/4" W x 5 3/4" H
Ceiling Cutout: 5 5/8"



Cat. #	Description
IC25R	5" IC Shallow Remodel Housing

12 1/2" L x 5 7/8" W x 5 3/4" H
Ceiling Cutout: 5 1/2"

AIR-LOC
Juno IC housings meet IECC Energy code requirements per ASTM E283. Air-Loc® rated trims are pre-gasketed for minimum air leakage with IC housings.

* UL listed for use in wet locations.
** UL listed for use in wet locations when used with outdoor rated PAR lamps.

SHALLOW TRIMS

DOWNLIGHTS



Shallow Baffle**
275B-WH Black
275W-WH White
Wattage/Lamps
50W BR30
50W PAR30
50W PAR30L

NEW



AIR-LOC



Shallow Cone**
276B-WH Black Alzak®
276W-WH Gloss White
276C-WH Clear Alzak®
276HZ-WH Haze
276WHZ-WH Wheat Haze
Wattage/Lamps
50W BR30
50W PAR30
50W PAR30L

NEW



AIR-LOC

LENSED



Frosted Lens with Clear Center*
212-ABZ Classic Aged Bronze
212-SC Satin Chrome
212-WH White
Wattage/Lamps
35W PAR30



AIR-LOC

ADJUSTABLES



Eyeball with Baffle
208W-WH White
208B-WH Black
Wattage/Lamps
50W PAR20
50W R20



PAR30 Eyeball
529-ABZ Classic Aged Bronze
529-SC Satin Chrome
529-WH White
Wattage/Lamps
50W PAR30



Gimbal Ring with Flat Trim
209-WH White
Wattage/Lamps
35W PAR30



Gimbal Ring in Baffle
688W-WH White
688B-WH Black
Wattage/Lamps
35W PAR30



Gimbal Ring in Cone
689C-WH Clear
689G-WH Gold
Wattage/Lamps
35W PAR30



JUNO LIGHTING GROUP
by Schneider Electric

1300 S. Wolf Road • Des Plaines, IL 60018
PHONE 847.827.9880 • FAX 847.827.2457 • junolightinggroup.com

Regional Offices & Warehouses:
California, Georgia, Illinois, Indiana, Pennsylvania, Texas, Ontario CN

Products shown in this brochure are covered by U.S. and international patents and patents pending. Specifications subject to change without notice. © 2009 JUNO LIGHTING, LLC. ALL RIGHTS RESERVED. Printed in the U.S.A. 12/09

LIT-JUNO-5INSH



6 61209 27249 2